

Diffusion film for LED lighting

OptSaver™ *L-series*

Energy efficient
light diffusion

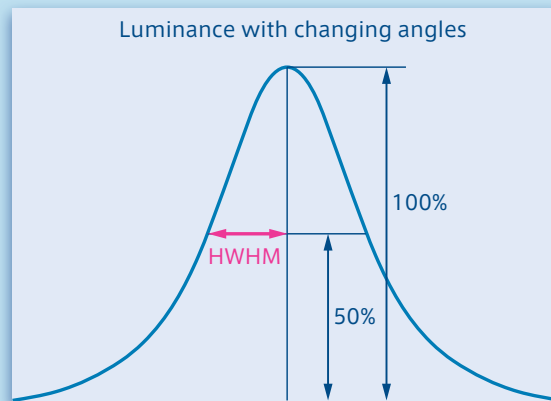
Wide range of illumination
angles and hiding ratios
for accurate light output

Thin and flexible roll material
enables creative design
and allows efficient
production process.

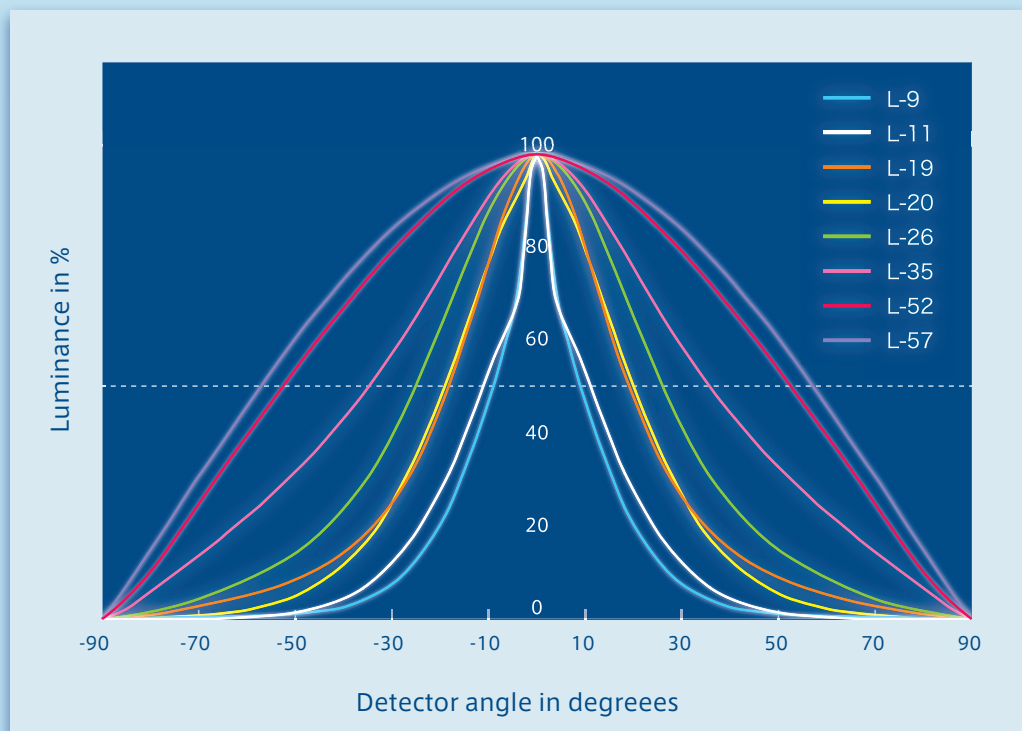
Physical Properties

Grade	Base film thickness	Half width at half maximum * (HWHM)	Total light transmittance (Tt)	Haze	Gloss
L-9	100 μm	9°	93.6 %	76.3 %	11.0
L-11	100 μm	11°	99.0 %	92.8 %	9.2
L-19	75 μm	19°	87.1 %	96.0 %	3.1
L-20	100 μm	20°	99.0 %	95.2 %	6.4
L-26	100 μm	26°	91.4 %	96.0 %	2.1
L-35	100 μm	35°	67.6 %	95.6 %	3.1
L-52	100 μm	52°	67.6 %	93.4 %	1.4
L-57	100 μm	57°	60.0 %	93.1 %	1.5

* HWHM: Illumination angle measured according to DIN5036

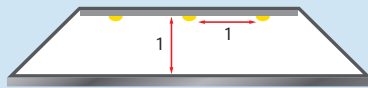


Diffusion Angle

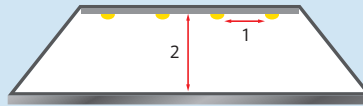


Hiding Ratio

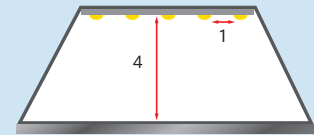
A low hiding ratio indicates efficient hot spot prevention and high diffusion. This allows to design compact luminaires without quality compromises. The wide range of our diffusion films allows you to fine tune the output characteristics.



1:1 Ratio
Strong diffusion



1:2 Ratio
Medium diffusion



1:4 Ratio
Low diffusion

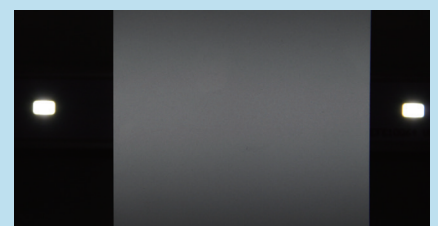
Hiding Ratio Examples

Grade	L-9	L-11	L-19	L-20	L-26	L-35	L-52	L-57
Hiding ratio	1:12	1:12	1:3	1:7	1:3	1:2	1:3	1:1.2

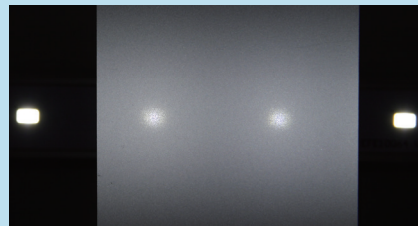
Grade L-9 Hiding ratio 1:12



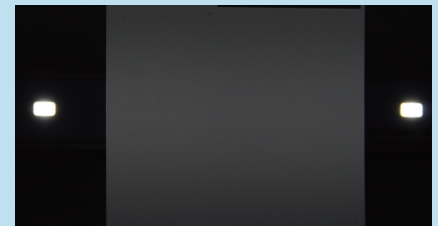
Grade L-26 Hiding ratio 1:3



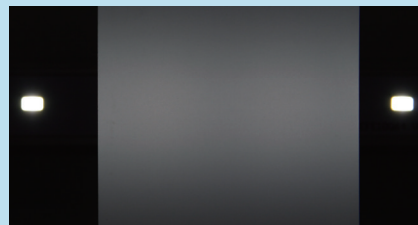
Grade L-11 Hiding ratio 1:12



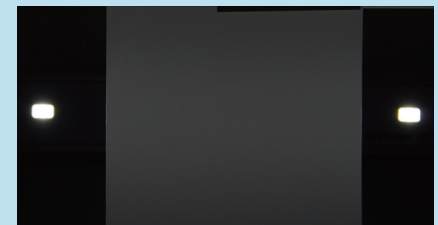
Grade L-35 Hiding ratio 1:2



Grade L-19 Hiding ratio 1:3



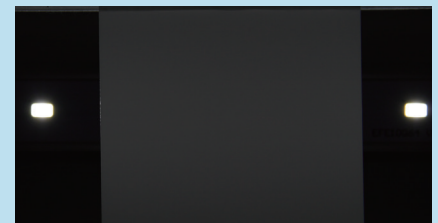
Grade L-52 Hiding ratio 1:3



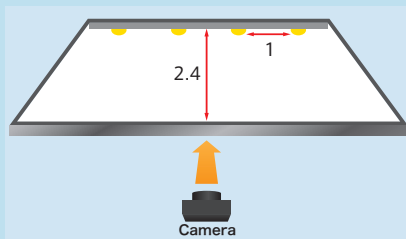
Grade L-20 Hiding ratio 1:7



Grade L-57 Hiding ratio 1:1.2



LED Light Source

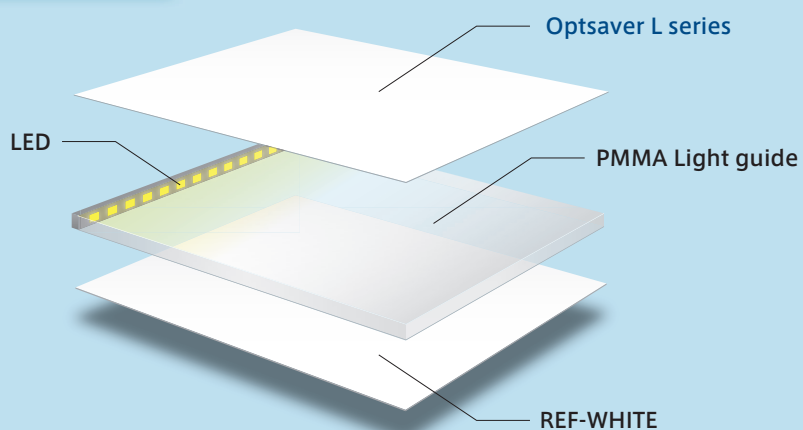


Test configuration

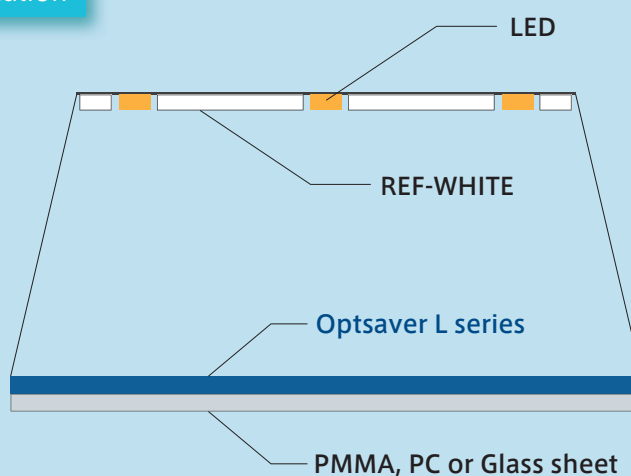
REF-WHITE

Product Type	Thickness (Total Thickness)	Spectral Reflection Factor			Gloss
		450nm	550nm	650nm	
RW125	125	94%	93%	92%	69.3
RW188	188	97%	96%	95%	23.5

Edge lighting



Direct illumination



The values listed in this catalog are measured values and not guaranteed values.
Note that the contents listed herein are subject to modification without prior notice.

KIMOTO

KIMOTO TECH, INC.
601 Canal St. Cedartown
Georgia 30125 U.S.A
TEL. +1-770-748-2643
<http://www.kimototech.com>

Inquiries